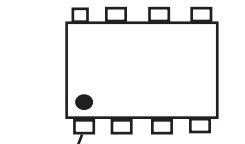


PARTS LIST

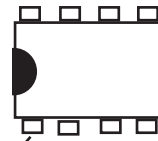
- R1 1K (BRN BLK RED)
- R2 5K or 10K Panel Pot or Trimmer Pot
- C1 10µF Capacitor **Watch Polarity**
- C2 .01µF Capacitor marked 103 or .01
- C3 100 µF Capacitor **Watch Polarity**
- U1S 8 Pin IC Socket **Watch Orientation**
- U1 TDA7052 I C **Watch Orientation**
- Printed Circuit Board # 080-00390

ASSEMBLY INSTRUCTIONS

1. Insert and Solder R1
 2. Insert and Solder U1S - **Watch Orientation**
 3. Insert and Solder C2
 4. Insert and Solder C1 - **Watch Polarity**
 5. Insert and Solder C3 - **Watch Polarity**
 6. Insert and Solder R2
 7. Connect a Speaker (**NOT SUPPLIED**)
 8. Connect a Power Conn (**NOT SUPPLIED**)
- Check all of your connections before you insert U1 and apply power.**
9. Connect an Audio source to the input.
 10. Apply Power and adjust R2 for desired audio level.

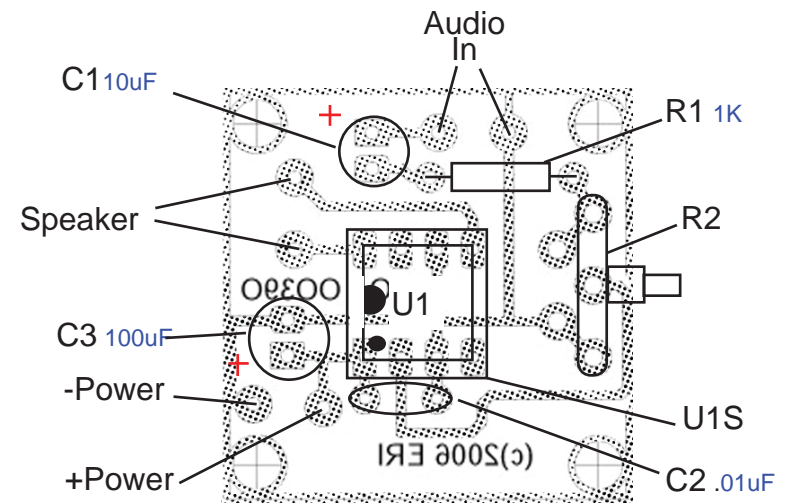


PIN 1
Indicated by a DOT



PIN 1
Indicated by a 'half moon' on the end of the IC near pin 1

PARTS PLACEMENT



GENERAL INFORMATION

The TDA7052 is a mono output amplifier designed for battery operated portable audio applications, such as tape recorders, radios, and amplifiers for portable audio devices. The TDA7052 uses the Bridge-Tied-Load principle (BTL) which can deliver an output power of 1.2 W @ THD = 10% (THD is the total amount of audio distortion) into an 8 ohm load with a power supply of 6 V. This device will operate from 3 to 18 Volts. The Gain is fixed internally at 40 dB. The input impedance of the TDA7052 is 100K ohms. The frequency response is 20 Hz to 20 KHz. The quiescent current is 4 ma at 6 V, and 8 ma at 18 V. The Quiescent current helps determine the amount of time a battery will last.



AP-1W Audio Amplifier Kit

Rainbowkits.com LLC

2238 West US Highway 36
Danville IN 46122 - 317-745-5602

www.rainbowkits.com

7-19-2010

